

Commercial Quality — ASTM A569

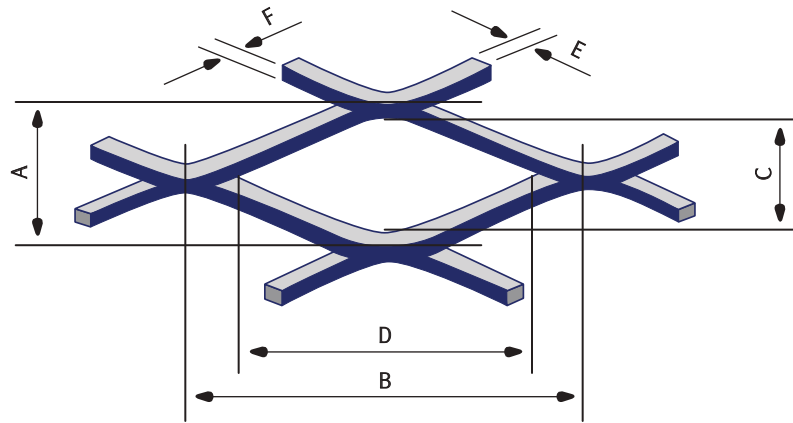
Size in Inches		Weight Per Plate	
10 ga. = 0.1345" = 5.822 lbs. per sq. ft.			
10 ga. x	48 x	96	186.3
		120	232.88
		144	279.46
	60 x	120	291.1
		144	349.32
		240	698.64
	72 x	120	349.32
		144	419.18
		240	838.36
84 x	240	815.08	
96 x	240	931.52	
11 ga. = 0.1196" = 5.175 lbs. per sq. ft.			
11 ga. x	48 x	96	165.6
		120	207.0
		144	248.4
	60 x	120	258.75
		144	310.5
		240	621.0
	72 x	120	310.5
		144	372.6
		240	745.2
12 ga. = 0.1046" = 4.528 lbs. per sq. ft.			
12 ga. x	48 x	96	144.9
		120	181.12
		144	217.34
	60 x	120	226.4
		144	271.68
		240	543.36
	72 x	120	271.68
		144	326.02
		240	652.04
14 ga. = 0.1046" = 4.528 lbs. per sq. ft.			
14 ga. x	48 x	96	103.49
		120	129.36
		144	155.23
	60 x	120	161.7
		144	194.04
		240	388.08
	72 x	120	194.04
		144	232.85
		240	465.70
16 ga. = 0.0598" = 2.587 lbs. per sq. ft.			
16 ga. x	48 x	96	82.78
		120	103.48
		144	124.18
	60 x	120	129.35
		144	155.22
		240	310.44

Weights may vary due to production tolerances.

HOT ROLLED SHEETS



STEEL



- A. WIDTH OF MESH (SWD) D. LENGTH OF OPENING
- B. LENGTH OF MESH (LWD) E. STRAND THICKNESS
- C. WIDTH OF OPENING F. STRAND WIDTH

This material has advantages in savings in weight and metal, free passage of light and air and spilled liquids and a decorative effect. Applications include machinery guards, walkways and catwalk gratings, shelving, partitions, grilles, screens panels, etc.

STANDARD RAISED MESH

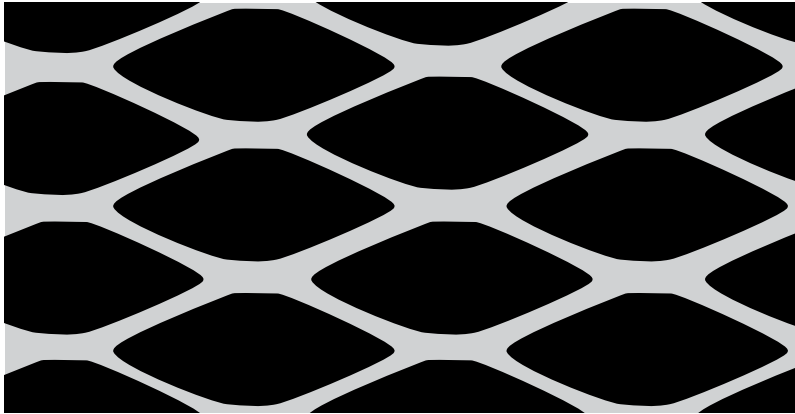
Style No. (Use for ordering)	Approx. Wt. Per Sheet	Centre to Centre of Bridges		Size of Openings		Strand		% Open Area
		A SWD	B LWD	C SWD	D LWD	E Thick	F Width	
3/16 - 22	18	0.203	0.5	0.11	0.313	0.03	0.047	52 - 58
3/16 - 20	29	0.2	0.5	0.08	0.313	0.036	0.063	40 - 44
5/16 - 18	33	0.292	0.75	0.108	0.563	0.048	0.087	48 - 54
1/2 - 18	22	0.5	1.2	0.438	0.938	0.048	0.082	72 - 78
1/2 - 16	25	0.5	1.2	0.375	0.938	0.06	0.087	61 - 65
1/2 - 13	47	0.5	1.2	0.312	0.938	0.09	0.096	52 - 58
3/4 - 16	17	0.923	2.0	0.813	1.75	0.06	0.099	84 - 88
3/4 - 13	26	0.932	2.0	0.75	1.68	0.09	0.098	76 - 80
3/4 - 9	58	0.932	2.0	0.688	1.5	0.135	0.149	65 - 70
1 - 16	20	1.125	2.375	0.844	1.69	0.06	0.124	76 - 81
1 - 14	24	1.125	2.375	0.875	1.563	0.075	0.122	75 - 79
1 - 12	33	1.125	2.375	0.907	1.563	0.105	0.109	71 - 75
1 - 10H	64	1.125	2.375	0.75	1.563	0.135	0.188	67 - 71
1 - 10H*	64	1.125	2.375	0.75	1.563	0.135	0.178	67 - 71
1 1/2 - 10H	64	1.33	3.0	0.83	2.375	0.135	0.24	70 - 74

Stock size for all above is 4' SWD x 8' LWD.

H = Heavy G = Gauge L - Light

*8' SWD x 4' LWD

STEEL



FLATTENED

All weights and dimensions shown are approximate.

Most styles of steel expanded metal sheets can be readily galvanized.

Please contact our sales department for styles not listed or for your specific requirements.

FLATTENED MESH

Style No. (Use for ordering)	Approx. Wt. Per Sheet	Centre to Centre of Bridges		Size of Openings		Strand		% Open Area
		A SWD	B LWD	C SWD	D LWD	E Thick	F Width	
3/16 - 22F	17	0.218	0.5	0.094	0.343	0.027	0.063	39 - 43
3/16 - 20F	28	0.218	0.5	0.094	0.343	0.032	0.063	39 - 43
5/16 - 18F	30	0.375	0.75	0.191	0.563	0.04	0.092	43 - 47
1/2 - 18F	21	0.5	1.25	0.313	1.0	0.04	0.097	53 - 57
1/2 - 16F	24	0.5	1.25	0.313	1.0	0.05	0.096	53 - 57
1/2 - 13F	45	0.5	1.25	0.375	1.0	0.07	0.11	50 - 56
3/4 - 16F	17	0.923	2.1	0.75	1.75	0.048	0.11	74 - 78
3/4 - 13F	24	0.923	2.1	0.688	1.781	0.07	0.108	72 - 77
3/4 - 9F	56	0.923	2.1	0.563	1.688	0.12	0.165	63 - 69
1 - 16F	19	1.312	2.375	1.0	2.0	0.051	0.132	73 - 76
1 - 14F	23	1.312	2.375	1.0	2.0	0.07	0.125	70 - 75
1 - 12F	32	1.312	2.375	1.0	2.0	0.085	0.156	66 - 71
1 1/2 - 13F	18	1.33	3.2	1.06	2.75	0.07	0.12	77 - 82
1 1/2 - 9F	36	1.33	3.2	1.0	2.56	0.11	0.158	72 - 78
1 1/2 - 10LF	53	1.33	3.2	1.0	2.69	0.120	0.175	65 - 69

Stock size for all above is 4' SWD x 8' LWD.

Expanded Metal Sheets



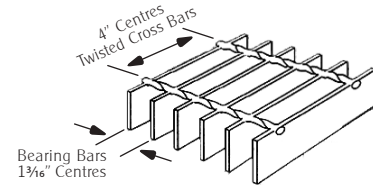
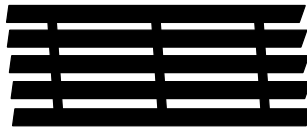
Grating

HEAVY GRATINGS

Style No. (Use for ordering)	Approx. Wt. Per Sheet	Centre to Centre of Bridges		Size of Openings		Strand		% Open Area
		A SWD	B LWD	C SWD	D LWD	E Thick	F Width	
3 lb. Grating	132	1.33	5.33	0.94	3.44	0.183	.264	60
	96	Sheet size		5'6" SWD x 8'0" LWD				
4 lb. Grating	128	1.33	5.33	0.94	3.44	0.215	0.3	55
		Sheet size		8'0" SWD x 4'0" LWD				
5 lb. Grating	160	1.33	5.33	0.813	3.38	0.25	0.331	50
		Sheet size		8'0" SWD x 4'0" LWD				
6.25 lb. Grating	200	1.41	5.33	0.813	3.38	0.25	0.41	50
		Sheet size		8'0" SWD x 4'0" LWD				

WELDED BAR GRATING Standard Flowforge W19-4

STANDARD

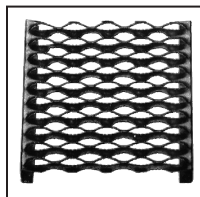


Size in Inches	Panel Size	Approximate Wt. Per Sq. Ft.	Approximate Wt. Per Panel
1 x 1/8	36" x 288"	5.03 lbs.	362 lbs.
1 x 3/16	36" x 288"	7.24 lbs.	520 lbs.
1 1/4 x 1/8	36" x 288"	6.12 lbs.	441 lbs.
1 1/4 x 3/16*	36" x 288"	8.87 lbs.	638.669 lbs.
1 1/2 x 3/16*	36" x 288"	10.51 lbs.	757 lbs.

Panels in Stock are Primed with one Coat of Red Primer. Bearing Bars at 1 3/16" centres. Twisted Cross Bars at 4" centres.

Please check with our Sales Staff for availability of other sizes, unprimed panels, galvanized, black panels and stair treads.

SAFETY GRATING Diamond Channel Grating



Width	Channel Depth	Nominal Thickness	Length	Theoretical Weight
4 3/4"	2"	12 ga. (.105)	12 - 0	43.0 lbs.
7"	1 1/2"	12 ga. (.105)	12 - 0	49.2 lbs.
9 1/2"	1 1/2"	12 ga. (.105)	12 - 0	61.2 lbs.
11 3/4"	1 1/2"	12 ga. (.105)	12 - 0	70.8 lbs.

Also available in Round Channel Grating.

